

| Product | Product number |
|--------------------------|-----------------------------|
| KLS-FF | 164001 |
| KLS-AL | 162006 |
| KLS-ES | 163003 |
| Related specification | |
| DIN 4095 | water-draining of buildings |
| FLL guidelines 5.6./2002 | |
| Related pages | |
| 9 | 10 |
| 11 | 12 |
| 16 | 21 |
| 27 | |

PRODUCTS

EDGING ■ GRAVEL BOARDS

Product description

The KLS gravel boards are available in a choice of metal or recycled polyethylene.

Application

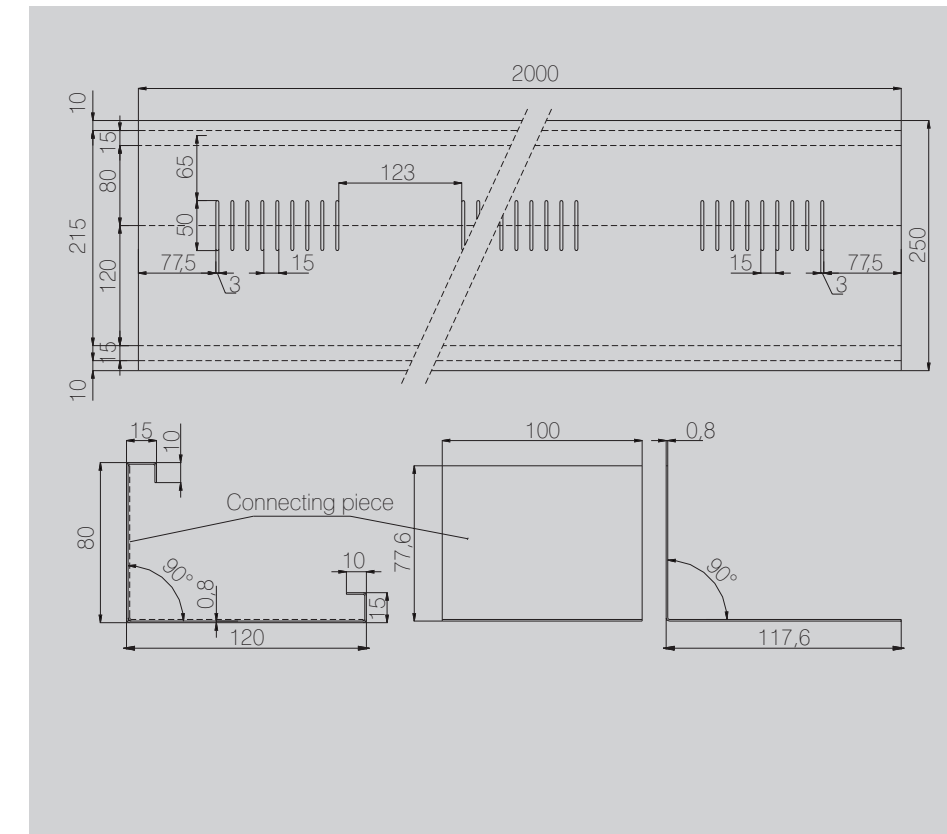
The KLS gravel boards create a vertical separation of the roof garden elements and act as a support at exposed edges.



| Technical data | Dim | KLS-FF-8/12 | KLS-ES-8/12 | KLS-AL-8/12 |
|-------------------------|--------------------|---|-----------------|-------------|
| Product number | | 164001 | 163001 | 162006 |
| Element length | [mm] | | 2000 | |
| Foot size/element width | [mm] | | 80 | |
| Height | [mm] | | 120 | |
| Material thickness | [mm] | | 0,8 | 1,50 |
| Mass | [kg] | 1,40 | 1,40 | 1,20 |
| Colour | | | - | |
| Material | | hot-dip galvanized steel | stainless steel | aluminium |
| Water drainage | [mm ²] | | 9000 | |
| Accessories | | binding elements, needed: 1 pc/2 r. meter | | |

PRODUCTS

EDGING ■ GRAVEL BOARDS



Advantages

- No need for bedding
- Can be quickly constructed
- Does not prevent water draining
- Long-lasting

Installation instructions

The separating profile elements are laid butt jointed and butt straps used for connecting one piece to another.

Tools needed for installation

Tin-ware handtools for cutting.

Product accessories

- Joint items

Frequently Asked Questions



Which side is to be built in?

This will depend on the height required, 8 cm or 12 cm.

How can they be fastened?

The weight of the substrate provides sufficient stability against the movement of the product.

Corner formation?

Formation of 90° corners can be done with special corner pieces or by cutting on site.

