

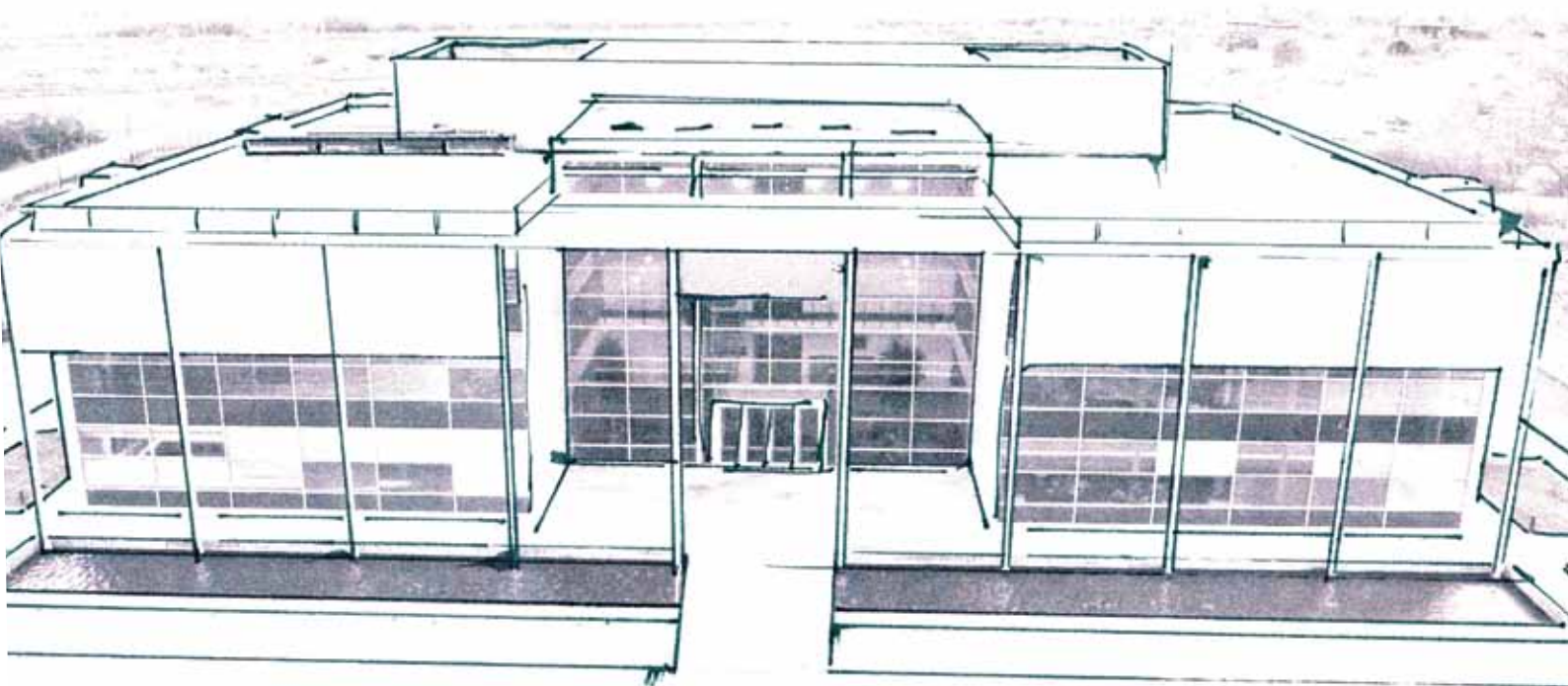


ICB

Sustainable Roofing Solutions

Waterproofing Membranes

XTEVA®



XTEVA[®]

Roofing membranes

XTEVA from ICB is a superior thermoplastic roofing membrane, manufactured from materials that have been successfully used across the world for more than 40 years.

The combination of the two solids EVA and PVC in the manufacturing process produces an extremely stable product that can be expected to have a long lifespan; an important aspect when considering the sustainability of products of this nature.

This process also produces a membrane which is very strong, yet has high levels of flexibility; crucial when you consider the stresses the membrane has to withstand not only from the climate but from the normal movements buildings undergo.

Add good UV resistance and you have a waterproofing membrane that is ideal for exposed roof areas though equally suitable for ballasted roofs, perhaps under paving or decking.



XTEVA is perfect for new build, but also, being bitumen compatible, for refurbishment projects, where it offers a very cost effective overlay solution to old felt or asphalt roofs.

The membrane offers extremely low vapour diffusion resistance, allowing moisture to escape from the roof build-up over the whole membrane surface. It is easy and quick to install by homogeneous hot-air or solvent welding in the overlap area and can be recycled.

Technical Data

			XTEVA
Properties	Testing Method	Unit	Result
Visible Defects	EN 1850-2		Pass
Effective thickness (e_{eff}) of the waterproofing	EN 1849-2	mm	2.4
Watertightness	EN 1928	kPa	pass
External Fire Performance	BS476 Part 3 1958	class	F.AB
Reaction to Fire	EN 13501-1	class	F
Joint Peel resistance	EN 12316-2	N/50 mm	≥ 150
Joint Shear resistance	EN 12317-2	N/50 mm	≥ 500
Tensile Strength	EN 12311-2	N/50mm	≥ 650
Elongation	EN 12311-2	%	≥ 40
Resistance to Impact Load	EN 12691	mm	≥ 300
Resistance to Static Load	EN 12730	kg	≥ 20
Tear Resistance	EN 12310-2	N	≥ 150
Resistance to Root Penetration	EN 13948	-	pass
Dimensional Stability	EN 1107-2	%	≤ 1
Low temperature Flexibility	EN 495-5	oC	≤ -25
Durability (UV exposure, high temperature & water)	EN 1297	-	pass
Long Term Exposure	EN 1847	kPa	pass
Hail resistance	EN 13583	m/s	≥ 17
Water Vapour Permeability	EN 1931		15000
Bitumen Compatibility	EN1548		pass



ICB (International Construction Bureau) Ltd is one of Britain's leading suppliers of sustainable, environment friendly roofing systems. Established for almost 30 years and supported by a nationwide network of fully trained licensed installers, the company has developed an enviable reputation for delivering quality, reliability and technical excellence.

In addition to XTEVA, ICB also supplies **FiberTite**, a cost effective mechanically fixed reinforced single ply membrane suitable for large roof areas and the high quality well established **Alwitra** Single Ply Roofing System with its flagship product **Evalon® Solar**.

Diadem, a green roofing system with more than 300 different components and compatible with any type of waterproof membrane, is also supplied by ICB and continues to be specified on high profile projects across the UK.

To complete the range is **Barrial**, a complete Guardrail Safety System manufactured from lightweight recyclable aluminium. The range is widely available across Europe where it has been successfully used for more than 20 years.

Add our products and systems together and they represent the ultimate roofing package.

www.icb.uk.com



ICB (International Construction Bureau) Ltd.
Unit 9-11, Fleets Industrial Estate,
Willis Way, Poole, Dorset, BH15 3SU UK
Tel: 01202 785200 Fax: 01202 785201
Email: info@icb.uk.com

www.icb.uk.com