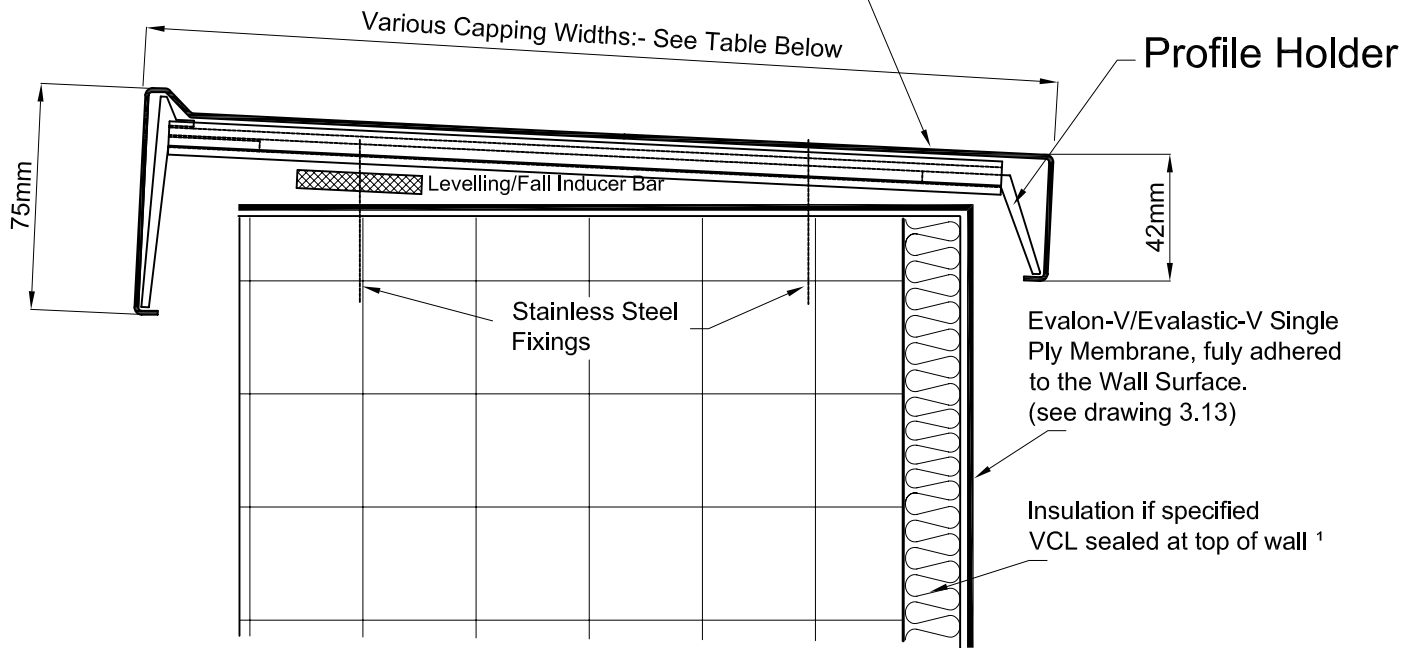


Rev. No.	Revision Note	Date	Signature	Checked
1	Conservation to Fuel & Power - SPRA Recommendations	24-05-04	RCT	

MAG Wall Capping Profile.



Specification:-

5 metre long Cold Rolled Aluminium 1.5mm thick. (2.0mm thick to Special Order)
Profile Holder designed to ensure secure and free-floating retention of the Main Capping Section.

The Levelling/Fall Inducer Bar (attached to the Profile Holder) is used to level the Capping or to create a fall to disperse standing Rainwater.

Capping Sizes:-

To Wall Thicknesses from 80 - 515mm.

Finish:-

Mill finish Aluminium, Anodised or Polyurethane coated finish to DIN 50939, available in wide range of RAL colours.

Accessories:-

Prefabricated Welded Corner Sections, Stop Ends, Abutment Ends, Specially Fabricated Sections.

Capping Type	Wall Thickness (mm)	Profile Holder Fixing Centres (mm)
MAG150	80-120	1,660
MAG175	120-140	1,660
MAG200	140-165	1,660
MAG225	165-190	1,660
MAG250	190-215	1,660
MAG275	215-240	1,250
MAG300	240-265	1,250
MAG350	265-315	1,250
MAG400	315-365	1,000
MAG450	365-415	1,000

Note :-

Fixings Centres of Profile Holders apply to buildings up to 20 Metres high. Contact ICB for buildings over 20 Metres. All Profiles must be installed as per ICB Ltd's Written Instructions, and in accordance with the Project Specification.

Owner



Title/Name

MAG Wall Capping Profile

Drawing Number

4.0

Drawn By

RCT

Date

01-11-03

Scale

nts