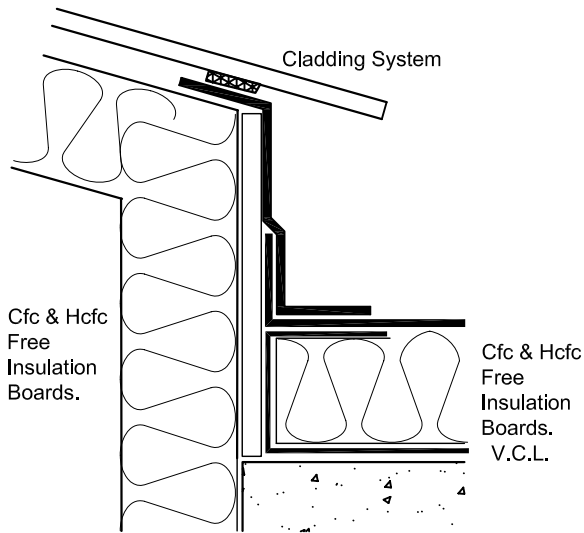


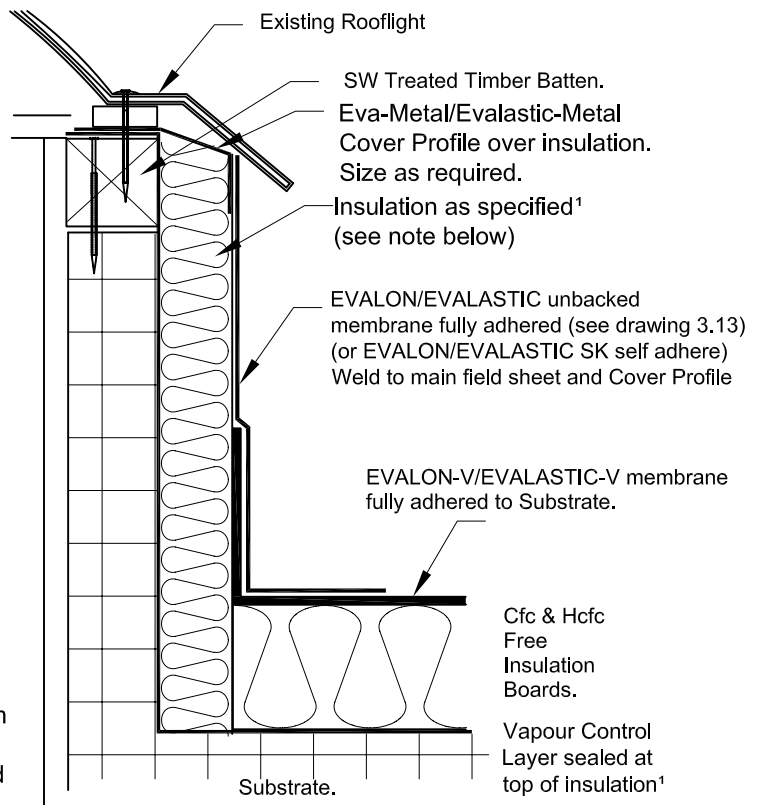
Rev. No.	Revision Note	Date	Signature	Checked
1	Conservation to Fuel & Power - SPRA Recommendations	24-05-04	RCT	



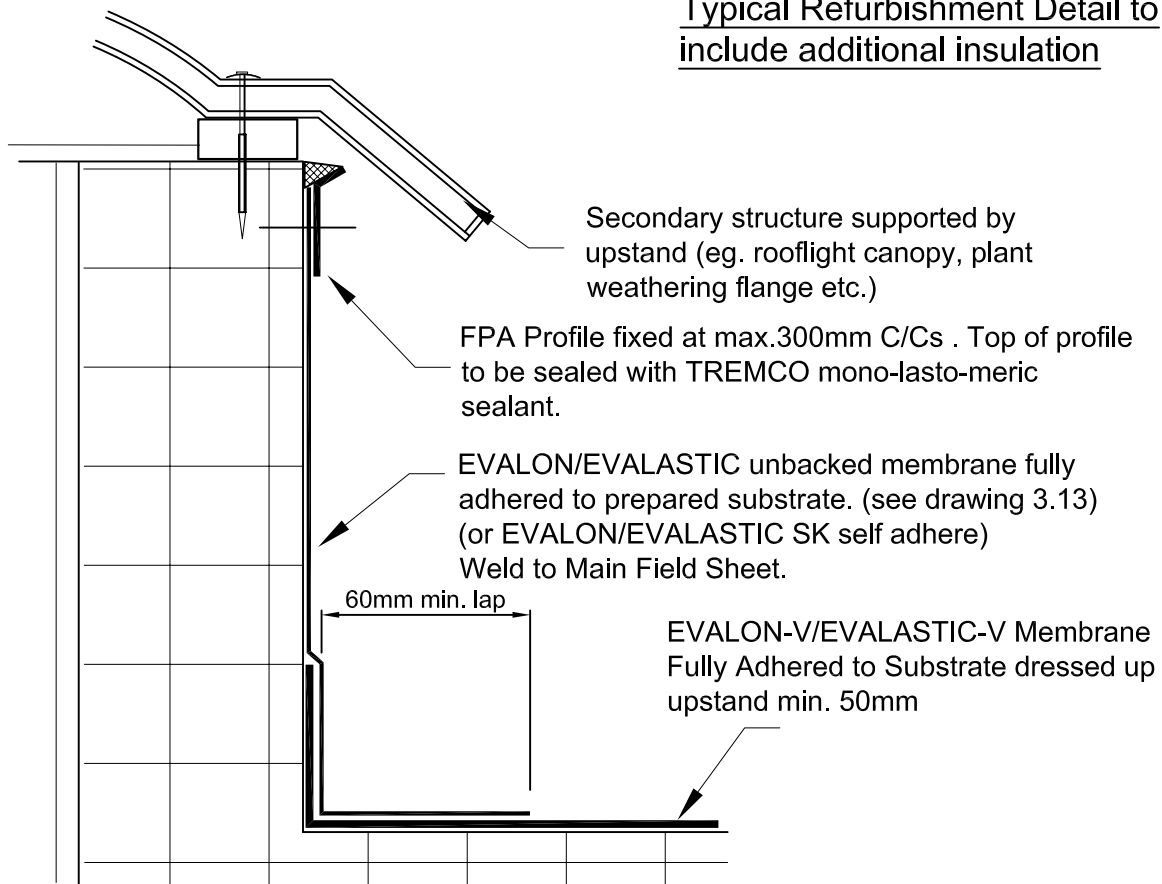
Typical Skirting to Cladding Detail

Refurbishment Guidelines

- Remove existing rooflight and set aside for later re-use.
- Lay VCL and insulation boards.
- Lay EVALON-V/EVALASTIC-V membrane fully adhered.
- Install new treated SW timber battens to raise rooflight 150mm above roof level or as required.
- Bond unbacked EVALON/EVALASTIC membrane to prepared upstand and timber batten as required. (see drawing 3.13)
- Replace rooflight canopy etc. using new fasteners and seals.



Typical Refurbishment Detail to include additional insulation



Notes:- All Surfaces must be prepared as per ICB Ltd's Written Instructions, and in accordance with the Project Specification. All Adhesives must be used as per the Manufacturers' Instructions.

¹ To avoid thermal bridging, the upstand must be insulated to achieve a minimum thermal resistance (R value) = 0.75m²K/W. This can be achieved by use of insulation as shown above or by other means (e.g. thermal insulation blocks)

Owner



Title/Name

Typical Plant, Rooflight or similar (Refurbishment) Upstand Detail

Drawing Number

3.6

Drawn By

RCT

Date

01-11-03

Scale

nts