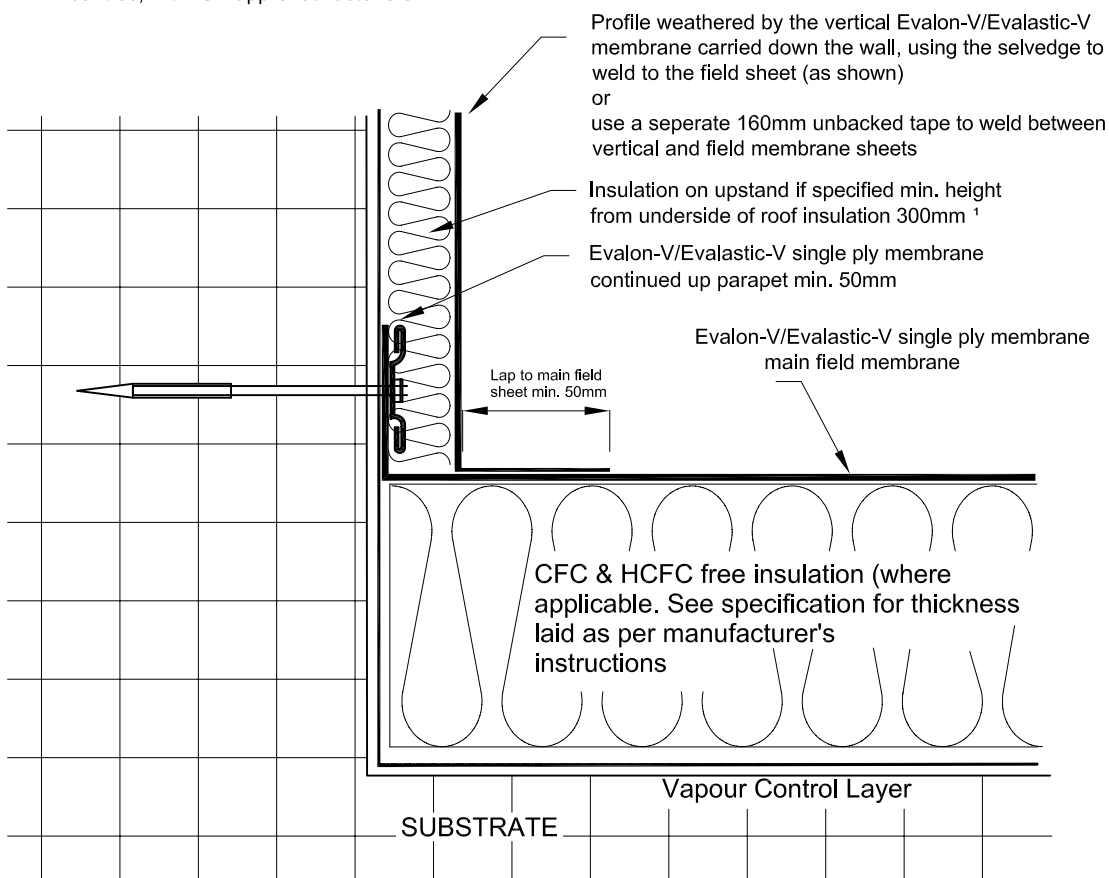
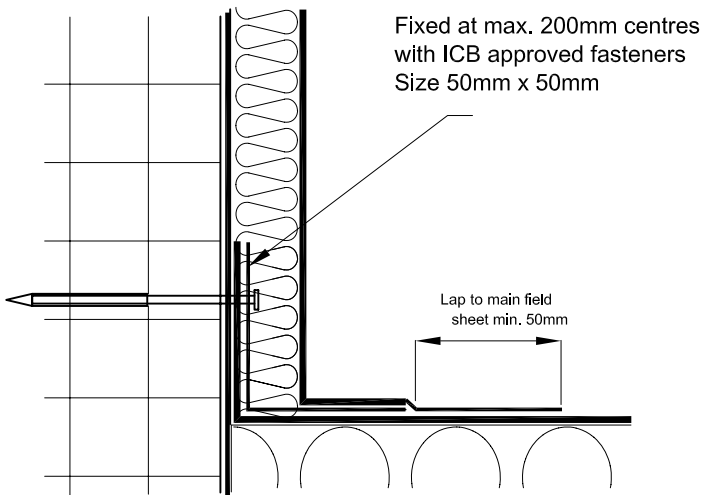


Rev. No.	Revision Note	Date	Signature	Checked
1	Conservation to Fuel & Power- SPRA recommendations	24-05-04	RCT	

ICB Peelstop profile fixed at base of perimeter walls, tank houses, rooflights, vents etc. at max. 200mm centres, with ICB approved fasteners



EVA-Metal/Evalastic-Metal Peelstop profile



Notes:

A Linear peelstop profile must be provided on all mechanically fixed membrane roofs or where the wind uplift forces in the perimeter zones are likely to exceed 2kN/m²

The profile must be fixed in position with ICB approved fasteners at max. 200mm centres.

All to be in accordance with the project specification and ICB Ltd instructions.

All surfaces must be prepared as per ICB Ltd's written instructions, and in accordance with the project specification.

All adhesives must be used as per the manufactures' instructions.

¹ To avoid thermal bridging, the wall must be insulated to achieve a min. thermal resistance ('R' value) = 0.75 m ²K/W. This can be achieved by use of insulation as shown above or by other methods (eg. thermal insulation blocks)¹

Owner



Title/Name

Skirting Detail with Peelstop Profiles

Drawing Number

3.0

Drawn By

RCT

Date

01-11-03

Scale

nts