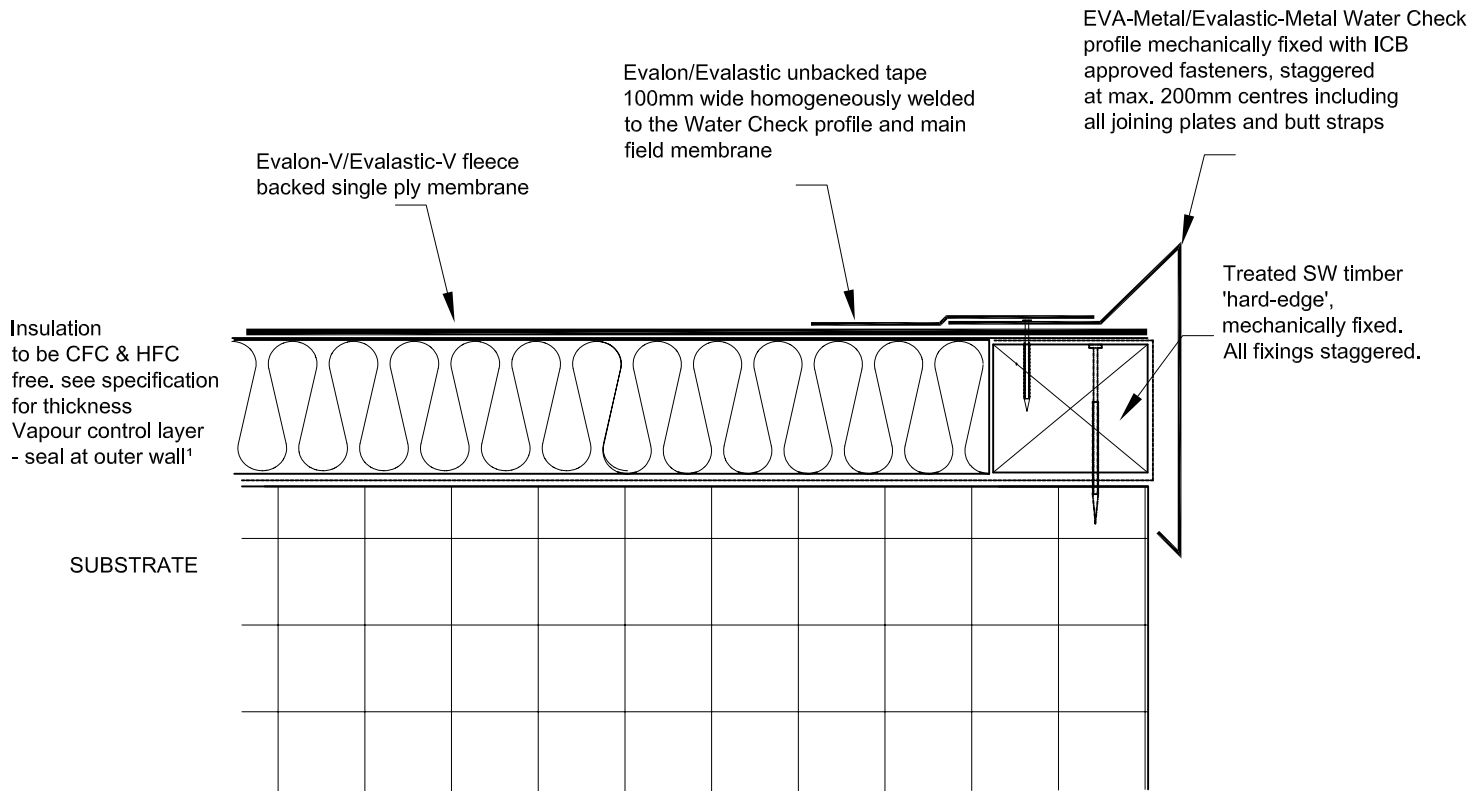
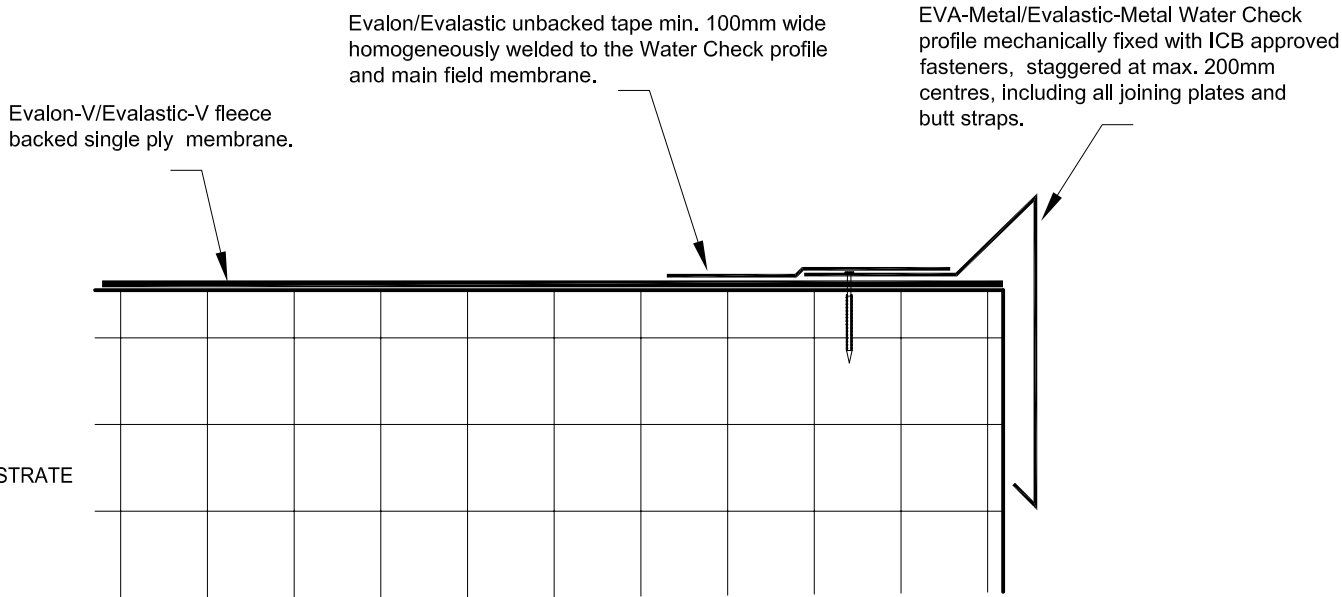



Rev. No.	Revision Note	Date	Signature	Checked
1	Conservation to Fuel & Power- SPRA recommendations	24-05-04	RCT	



Notes:-
 All Surfaces must be prepared as per ICB Ltd's Written Instructions, and in accordance with the Project Specification.
 All Adhesives must be used as per the Manufactures' Instructions.

Where wall surface is undulating, uneven or rough; a continous bead (min. 5mm wide) of ICB Ltd Approved Sealant is to be made to ensure that an Airtight Seal is provided between the Perimeter Profile or Trim.

Owner			Title/Name	
			Typical Perimeter Detail with Water Check Profile	
	Drawing Number	Drawn By	Date	Scale
	2.1	RCT	01-11-03	nts